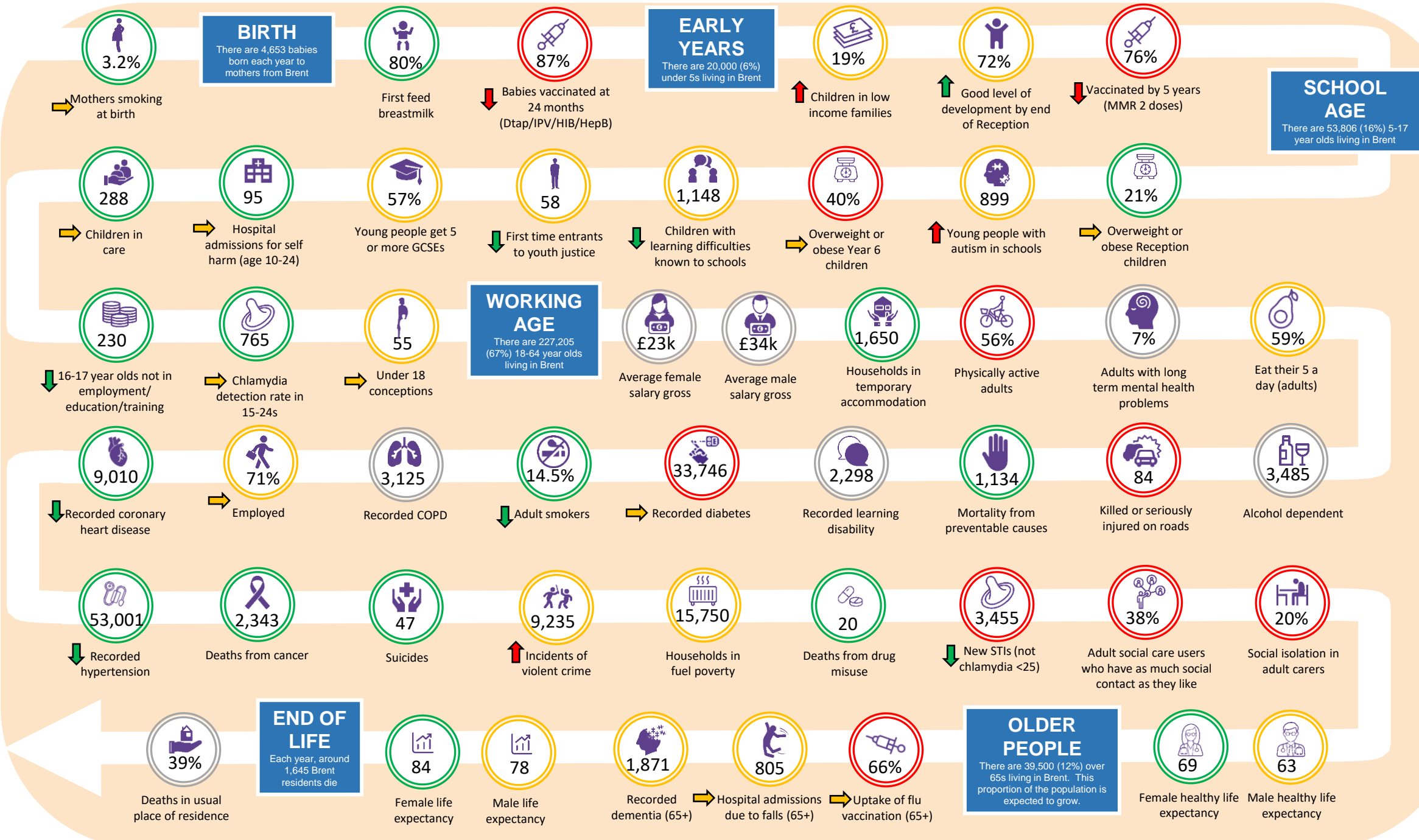


# Population health across the life course (2022)



**Data sources:** Public Health Outcomes Framework, May 2022; Annual Survey of Hours & Earnings 2021; GLA 2020 based housing led population projections. **Notes:** Numbers are for the latest year available, and in some cases cover an average for a one year period, where numbers rather than percentages are shown. Some numbers have been rounded for clarity – please refer to the original data. Red indicates worse than the London average, amber similar, and green better. Grey indicates that the direction of the indicator isn't necessarily good or bad. Arrows indicate recent trend where available – green indicates improvement, red indicates worsening, and amber indicates no significant change.